

GIOPATO & COOMBES

THE COLLECTION

The light turns on and with eyes wide open it feels like magic, like being children again.

BOLLE P06
SOFFIO P28
BOLLE FROSTED P44
SOFFIO FROSTED P53
SOFTSPOT P54
FLAUTI P62
THE COLLECTION P79



BOLLE

FLOWING THROUGH THE AIR



The lightness of the soap bubbles has become a metaphor for the immateriality of light. Bolle is a collection of lamps in transparent glass, where the illuminating brass bulb is suspending between the spheres, giving light to not only the space but also the curved surfaces, multiplying reflections to amplify the magical effect.

The Bolle lamp is available in two sizes, one with four and one with six bubbles. The two can be combined to form endless compositions.



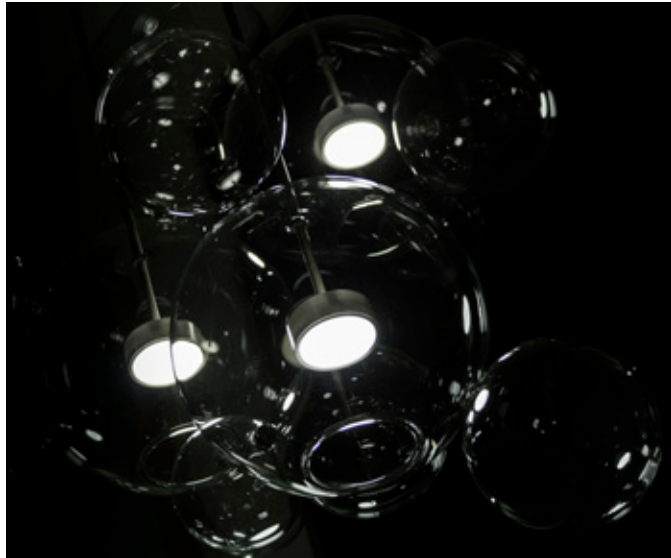
Two single Bolle pendants, a six spheres on the left and a four spheres on the right



A single Bolle is composed from a cluster of spheres



A composition with seven Bolle lamps mounted on a single canopy



Bolle cluster with 14 bubbles on a circular canopy





Millesime, a boutique Hotel in Paris, designed by DoubleG Architecture, located in the Saint-Germain-des-Prés district. The Architect decided to create a central island in the lounge where guests can take a seat and relax. A cluster of 5 Bolle lamps are hung above it.

Location: Millesime Boutique Hotel, Paris
Project: DoubleG Architect
Photo credits: Arnaud Fevrier





Giopato & Coombes search for excellence. This devotion can be seen in every detail. Christopher Coombes confesses his obsession with innovation and the search for the highest quality in manufacturing.

They work hard to make functions look beautiful and make beauty become functional in order to intertwine the two together, a kind of love affair that goes beyond this modernist cliché. Innovation is the goal when searching for new forms and new functions, and is the jump between better or different.



On the right a cluster of Bolle shown at Gallery Bensimon, during the Apartment exhibition

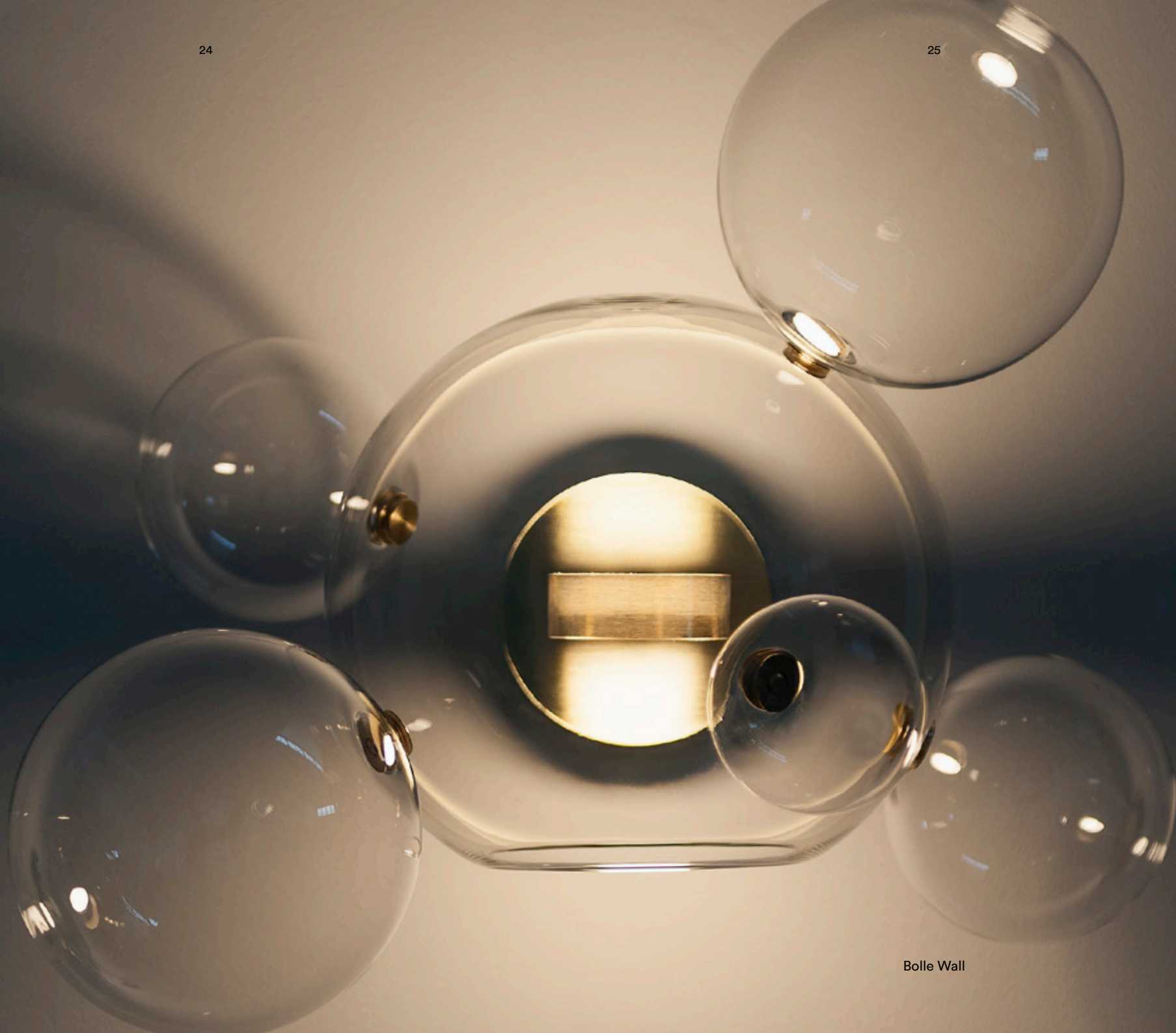


Each Bolle in the Bolle floor, can be rotated 320°, in this way it can change configuration and adapt itself according to its position in the Interiors, if it's positioned in a corner, or in the middle of the room.



Bolle floor lamp





Bolle Wall

The Bolle family has added two versions of wall lamps. You can have the 6 spheres one or the 4 spheres one. The brass fixture glow upwards and downwards, 50% flux in both ways.



Together with selected artisans, Giopato&Coombes look for the best manufacture technique for every single project. The Bolle lamps are hand blown by local Venetian artisans using the “a lume” technique. It’s a thing of sharing visions, experience, possibilities, finding the best way to hold the dream.



Six bubbles Bolle Wall above

SOFFIO

A SINGLE BLOW

Soffio is a lamp of simple and elegant design, characterized by the contrast between the evanescence of one blow that generates the sphere of glass and the solidity of the structure that supports it: as light as a soap bubble, the sphere floating in the air, surrounds the light source.

It's just one blow, but it has to be perfect!

Heart and structure of the project, the LED source, an high-quality technology extremely efficient, that emanates a warm and suffused light, in contrast with the minimal shape of the lamp.



The inner brass core can be treated with several finishes



Soffio Pendant



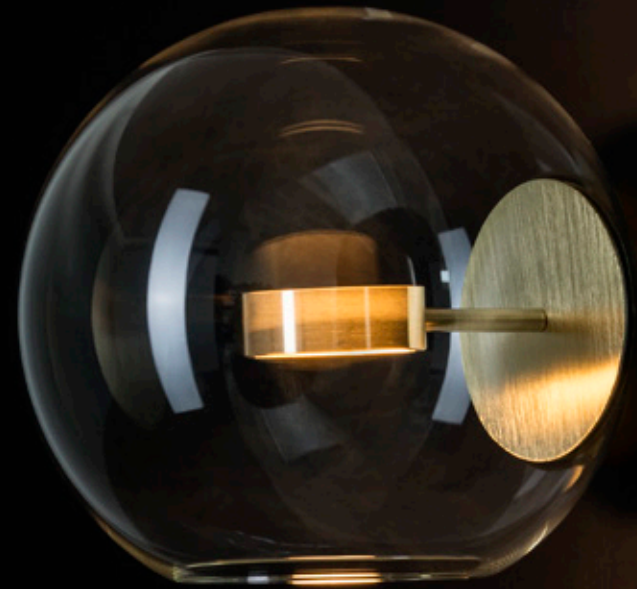
Born from a bespoke project in Japan, the Soffio lamp is now available 18cm in diameter. The proportions are so cute that we had to include it in our catalogue. The same size is also perfect to hang on the wall, seen here on the right.



Soffio Pendant Small



Soffio Wall Vertical Small



Soffio Wall Horizontal



In the table lamp version, the sphere floating in the air, surrounds the light source and is connected to the solid marble base by a slender brass stem.

It's available white Statuario marble or black Marquina marble.

Other marbles can be supplied for bespoke versions.





The floor lamp is available in 2 heights: 170 cm and 140 cm. The 140 cm height one, shown in the picture on the right, is perfect by an armchair or a sofa, as it's a perfect reading height. The 170 cm is the most common height. The light is soft and gives a slight accent to the room.



As part of our research we experiment with new materials and surface finishes. The results can lead to limited editions for Design Galleries. Cristiana is working on the final touches of one for Galerie Bensimon in Paris for which these two Soffio Floor Lamps have been produced in a limited series of 6 pieces, plus our 1st prototype.

With two separate themes, the white version has inverted the position of the bubbles with the main bubble full of small glass blown bubbles, and the black version is a technique developed by the studio with a smoke and mirror finishing by hand along with a polished black nickel metal finish.





BOLLE FROSTED CLOUD GAZING

The Bolle Frosted inverts the perception of the Bolle project. Whereas Bolle play with the emptiness, Bolle Frosted work with the positive volume of the spheres, creating satellites that seem to grow and move together through the space.



Interior design by Géraldine Bonnefoux



Bolle Frosted Pendants



A cluster of 5 Bolle frosted, hang in the middle of this living room.

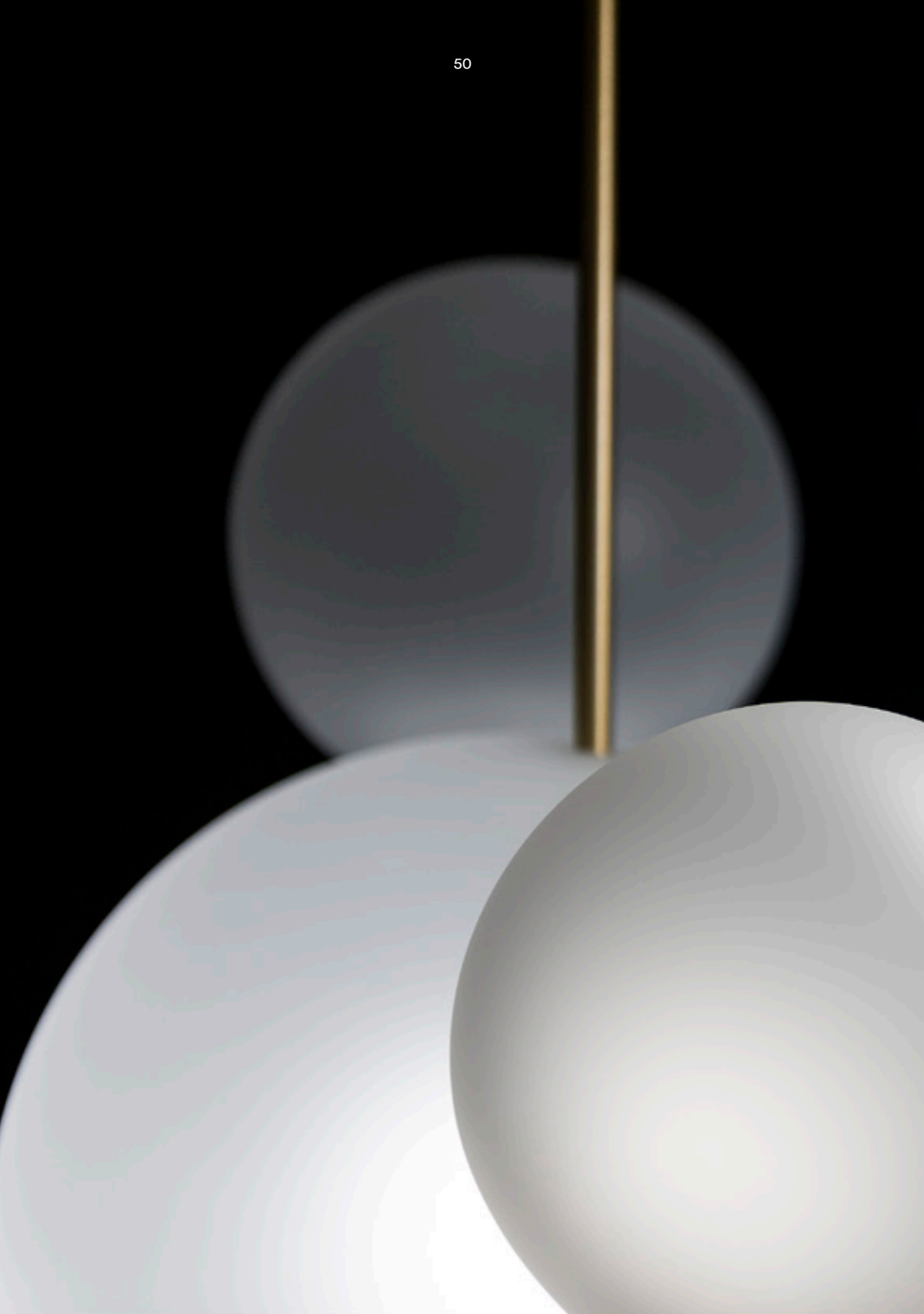


Bolle frosted have been chosen by Interior Designer, Geraldine Bonnefoux, for this superlative apartment, facing the Tour Eiffel.

Interior designer: Géraldine Bonnefoux
Photo: Sébastien Dondain



Bolle Frosted 34 bubbles circular chandelier



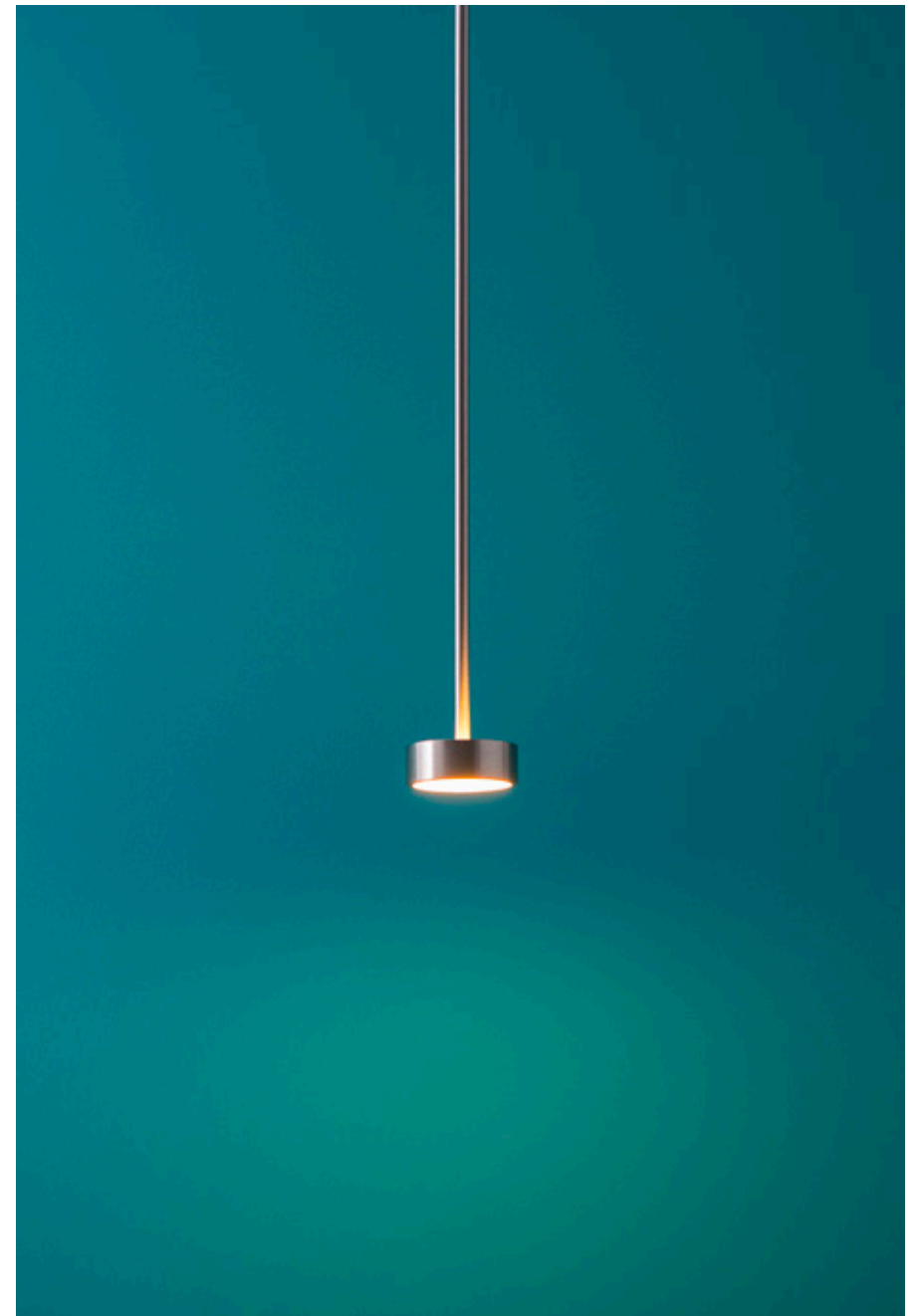


SOFTSPOT

MINIMAL ESSENCE

The minimal exterior hides an internal architecture manufactured with clockwork precision for extreme LED cooling. The SoftSpot LED warm white bulb emits 75% light downwards for focused direct lighting and 25% upwards for low indirect lighting. The result is a soft interior atmosphere from a pure form.

The SoftSpot lamp is 100% designed and custom-made from the ceiling plate to the LED bulb. The single internal wheel component fuses together heat-sink, socket and cable block functions whilst allowing light to pass through. The only externally visible details are 3 air tunnels that add extra cooling by channelling air over the LED plate.



Softspot Pendant in brushed nickel finish





Bespoke finishing is available for all metal parts





Softspot 360° can be rotated for easy reading due to the fully focused beam

FLAUTI

VENETIAN HERITAGE

Our first light collection is made from Murano hand blown glass and turned brass, both high quality materials. Each module crystallizes a different breath and is unique, only vaguely similar to next production. Spontaneity and improvisation are part of the project, and are promoted as proof of the handmade. The combination of matching modules, which use different traditional Murano glass blowing techniques and processes. The traditional Muranese colours evoke the sunset of the Venetian Lagoon. The Flauti lampshade is supported and illuminated by the custom designed SoftSpot bulb which, in contrast to the romantic soul, is a precise brass cylinder packed with the latest in LED technology. The combination of tradition and technology found in the Flauti project searches for a new equilibrium which again represents Venice, a cornerstone of romance set in a world of technological advancement.



Flauti shown in Clerkenwell, during the London Design Festival





Flauti mix and match of Murano colours and techniques





The magic of 500 year old artisan techniques combined with the latest LED technologies. Master glass-blower and Christopher working on the first prototypes. The glass is shaped with metal tools, this is why, while it crystallized the tools might leave signs on the surface. This is not considered, from us, a defect, but a sign that they are all made by hand, not from a mould but from the hand and passion of a human being.











Flauti wall lamp, available for all Flauti models

THE COLLECTION



Bolle Transparent 4 Bubble Pendant
Brushed Brass
BLT-P04-BR



Bolle Transparent 6 Bubble Pendant
Brushed Brass
BLT-P06-BR



Bolle Transparent 14 Bubble Linear Chandelier - Brushed Brass
BLT-C14L-BR



Bolle Transparent 14 Bubble Circular Chandelier - Brushed Nickel, Black Cable
BLT-C14C-NKBC





Bolle Transparent 24 Bubble ZigZag Chandelier - Brushed Bronze, Black Cable
BLT-C24Z-BZBC



Bolle Transparent 34 Bubble Zigzag Chandelier - Brushed Brass, White Cable
BLT-C34Z-BRWC



Bolle Transparent 18 Bubble Floor
Lamp - Brushed Brass
BLT-F18-BR



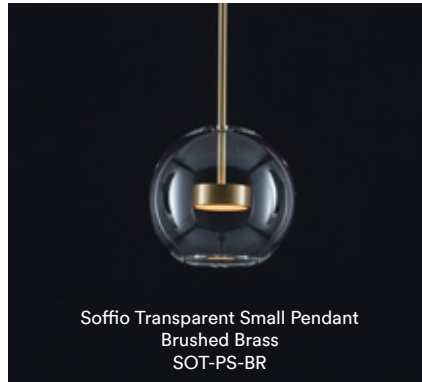
Bolle Transparent 12 Bubble Floor
Lamp - Brushed Brass
BLT-F12-BR



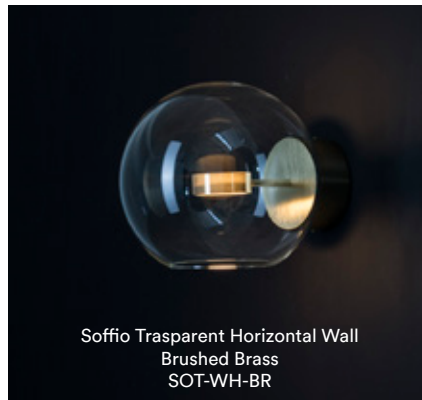
Bolle Transparent 6 Bubble Floor
Lamp - Brushed Brass
BLT-F06-BR



Soffio Transparent Large Pendant
Brushed Brass
SOT-PL-BR



Soffio Transparent Small Pendant
Brushed Brass
SOT-PS-BR



Soffio Transparent Horizontal Wall
Brushed Brass
SOT-WH-BR



Soffio Transparent Table - Brushed Brass,
White Marble
SOT-T-BRWM



Soffio Transparent Vertical Short Wall
Brushed Brass
SOT-WVS-BR



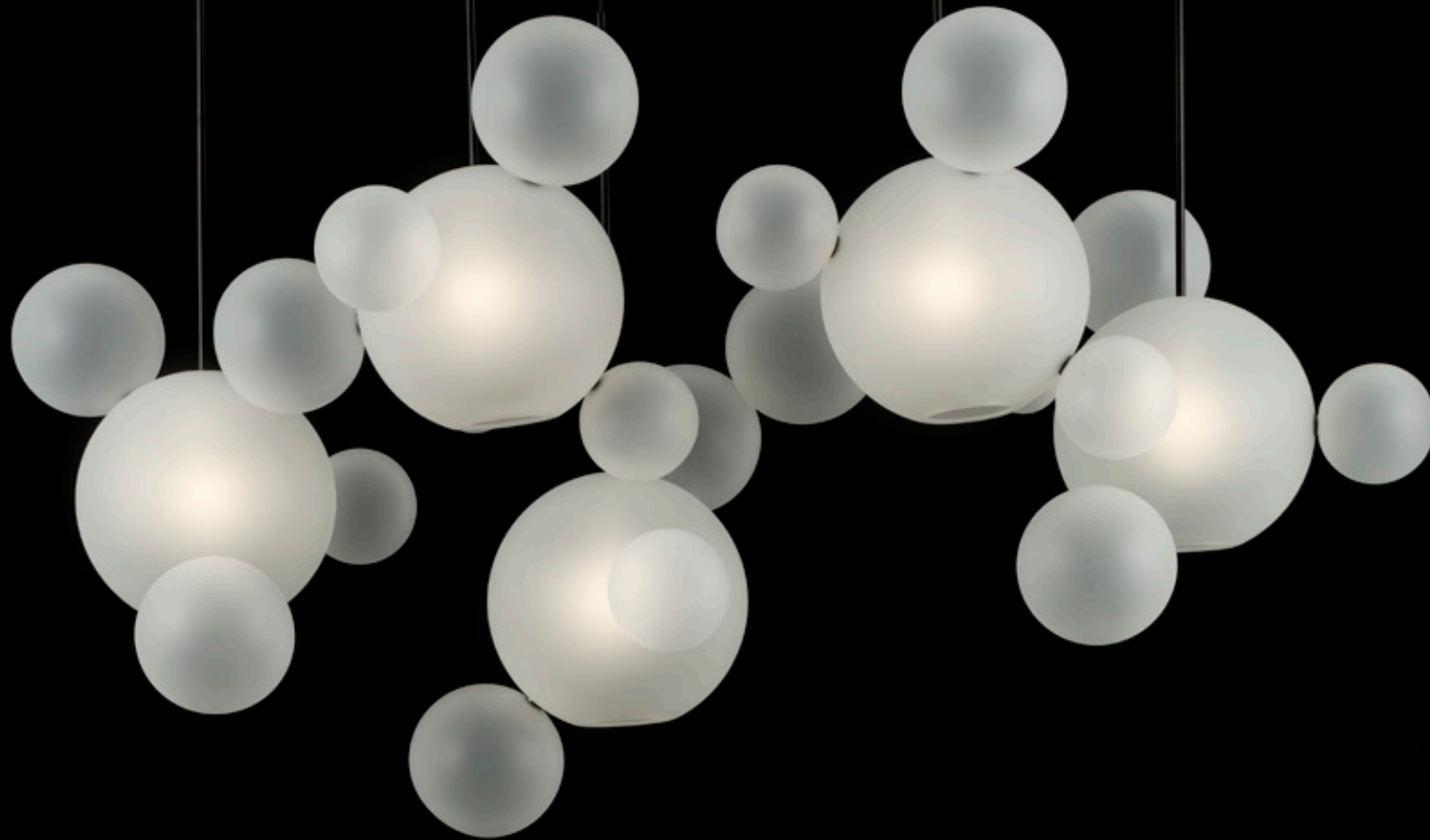
Soffio Transparent Long Floor -
Brushed Brass, White Marble
SOT-FL-BRWM



Soffio Transparent Short Floor -
Brushed Brass, White Marble
SOT-FS-BRWM



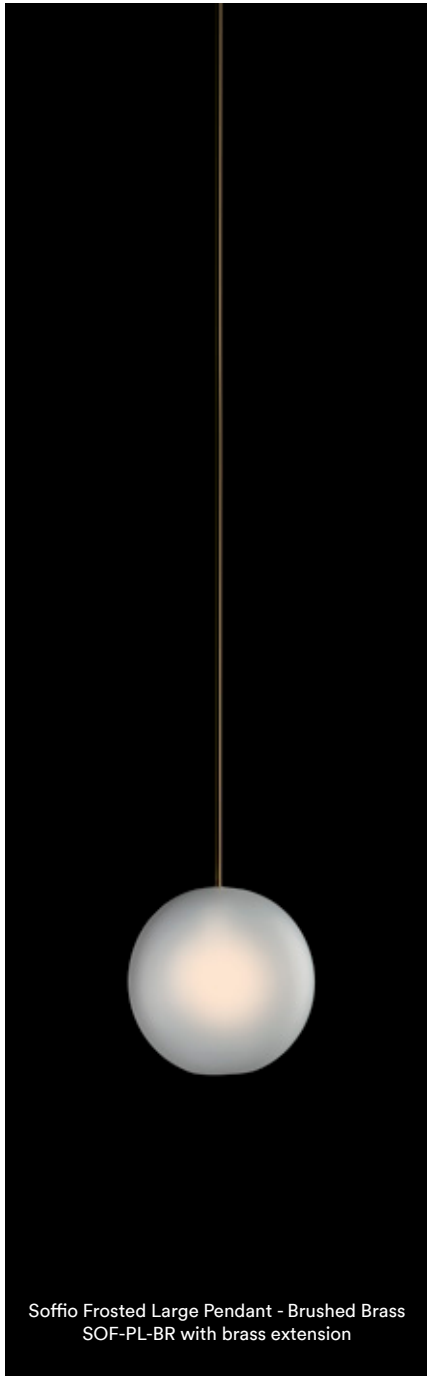




Bolle Frosted 24 Bubble Chandelier Zig-Zag - Blackened Brass, Black Cable
BLF-C24Z-BKBC



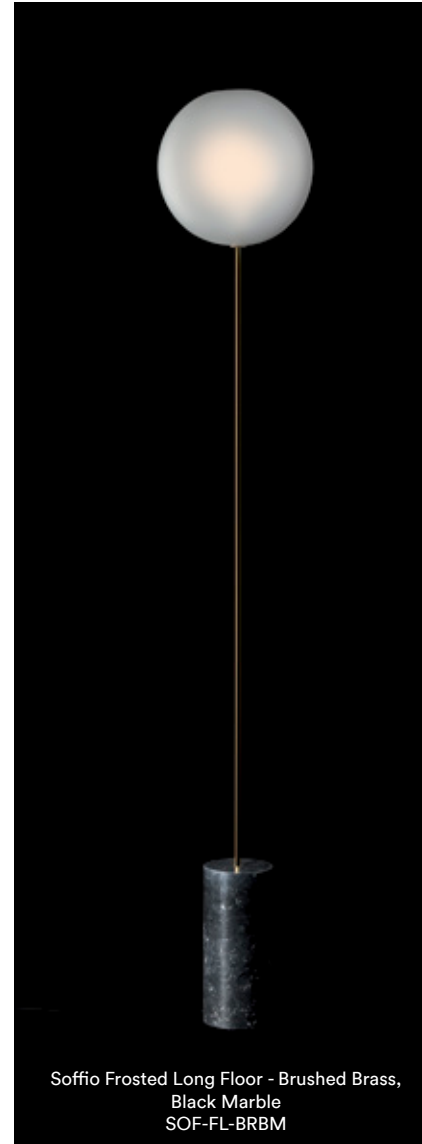
Bolle Frosted 34 Bubble Chandelier Zig-Zag - Brushed Brass, Black Cable
BLF-C34Z-BRBC



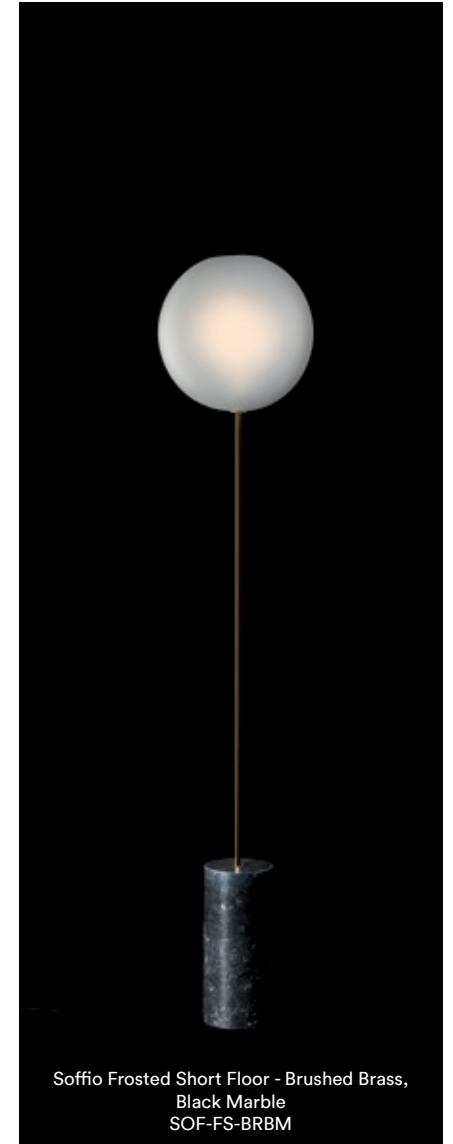
Soffio Frosted Large Pendant - Brushed Brass
SOF-PL-BR with brass extension



Soffio Frosted Table - Brushed Brass,
White Marble
SOF-T-BRWM



Soffio Frosted Long Floor - Brushed Brass,
Black Marble
SOF-FL-BRBM



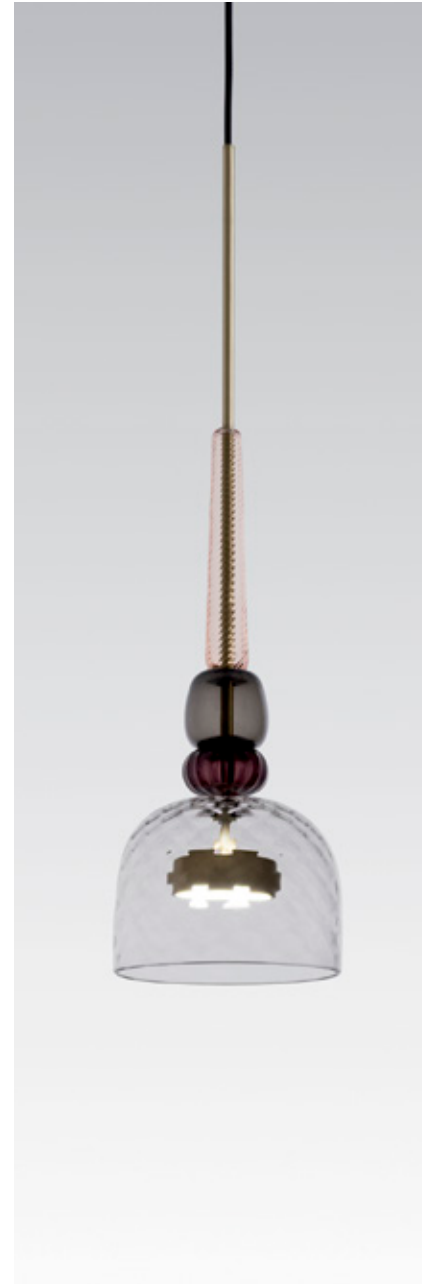
Soffio Frosted Short Floor - Brushed Brass,
Black Marble
SOF-FS-BRBM



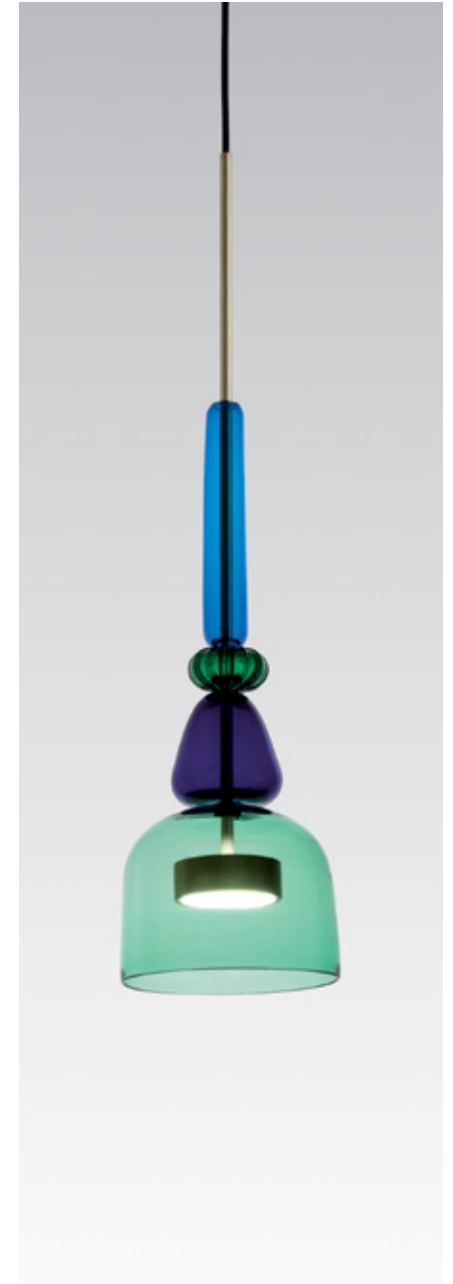
Flauti Orange1 Pendant - Brushed Brass,
Black Cable
FLA-PORA01-BRBC



Flauti Orange2 Pendant - Brushed Brass,
Black Cable
FLA-PORA02-BRBC



Flauti Crystal3 Pendant - Brushed Brass,
Black Cable
FLA-PCRY03-BRBC



Flauti Green1 Pendant - Brushed Brass,
Black Cable
FLA-PGRN01-BRBC



Flauti Blue 1 Pendant - Brushed Brass,
Black Cable
FLA-PBLU01-BRBC



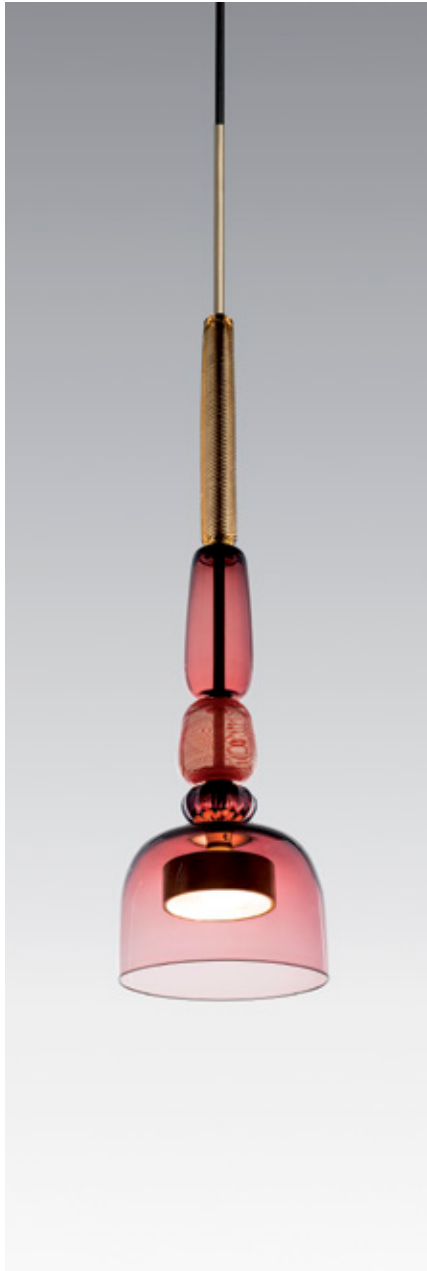
Flauti Blue 2 Pendant - Brushed Brass,
Black Cable
FLA-PBLU02-BRBC



Flauti Acquamarine 2 Pendant - Brushed Brass,
Black Cable
FLA-PAQM02-BRBC



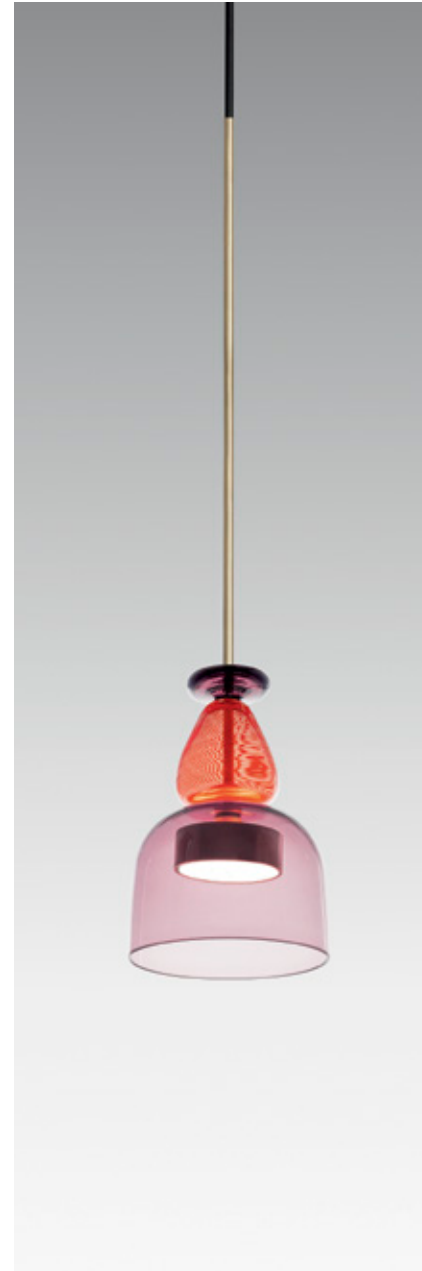
Flauti Blue 3 Pendant - Brushed Brass,
Black Cable
FLA-PBLU03-BRBC



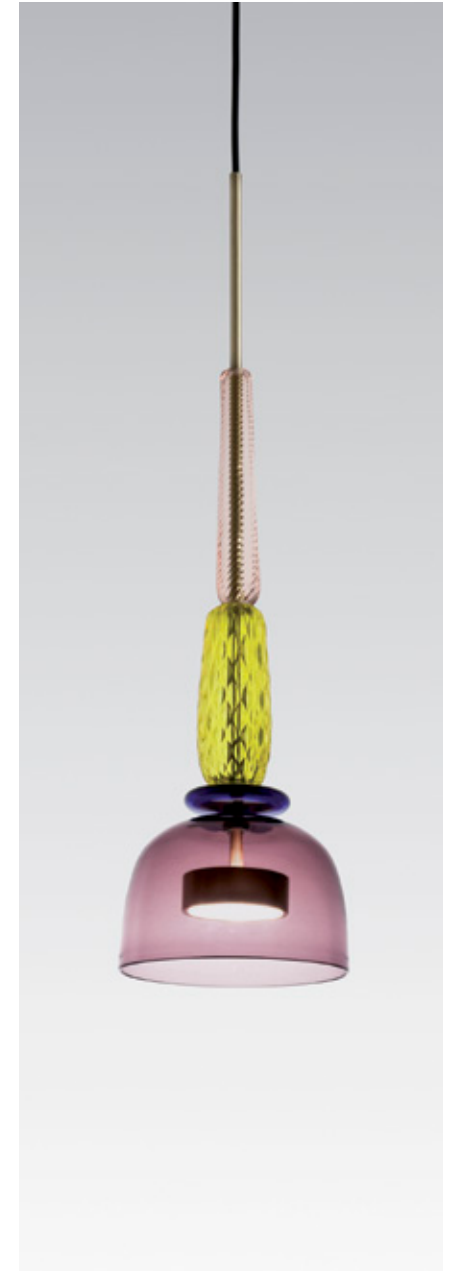
Flauti Amethyst 1 Pendant - Brushed Brass,
Black Cable
FLA-PAME01-BRBC



Flauti Amethyst 2 Pendant - Brushed Brass,
Black Cable
FLA-PAME02-BRBC



Flauti Lilac 1 Pendant - Brushed Brass,
Black Cable
FLA-PLLC01-BRBC



Flauti Lilac 2 Pendant - Brushed Brass,
Black Cable
FLA-PLLC02-BRBC



Flauti Rose 1 Pendant - Brushed Brass,
Black Cable
FLA-PRSE01-BRBC



Flauti Rose 3 Pendant - Brushed Brass,
Black Cable
FLA-PRSE03-BRBC



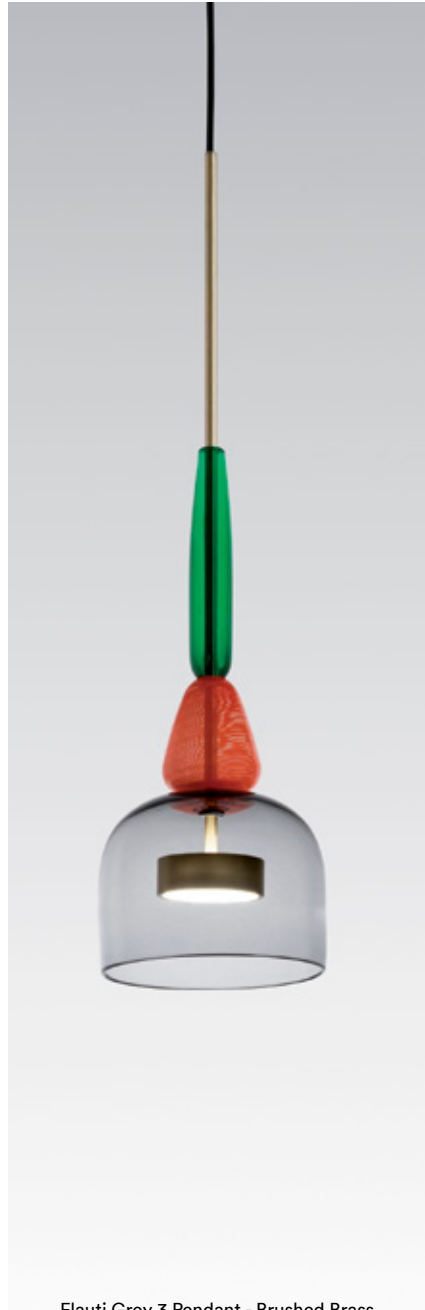
Flauti Amber 2 Pendant - Brushed Brass,
Black Cable
FLA-PAMB02-BRBC



Flauti Amber 3 Pendant - Brushed Brass,
Black Cable
FLA-PAMB03-BRBC



Flauti Grey 1 Pendant - Brushed Brass,
Black Cable
FLA-PGRY01-BRBC

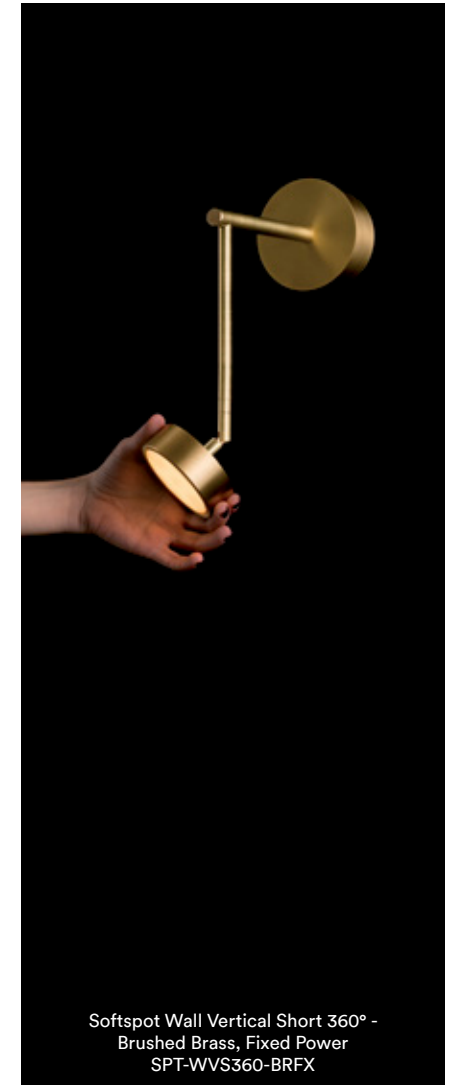
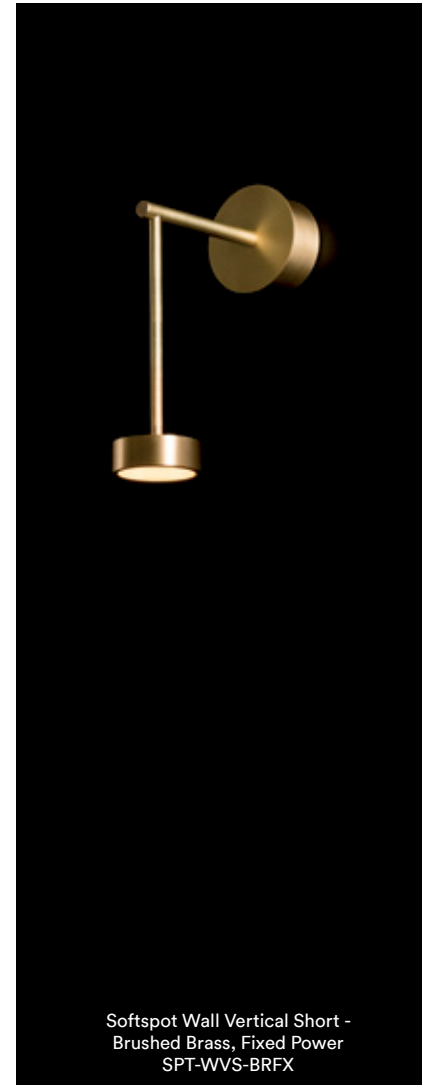
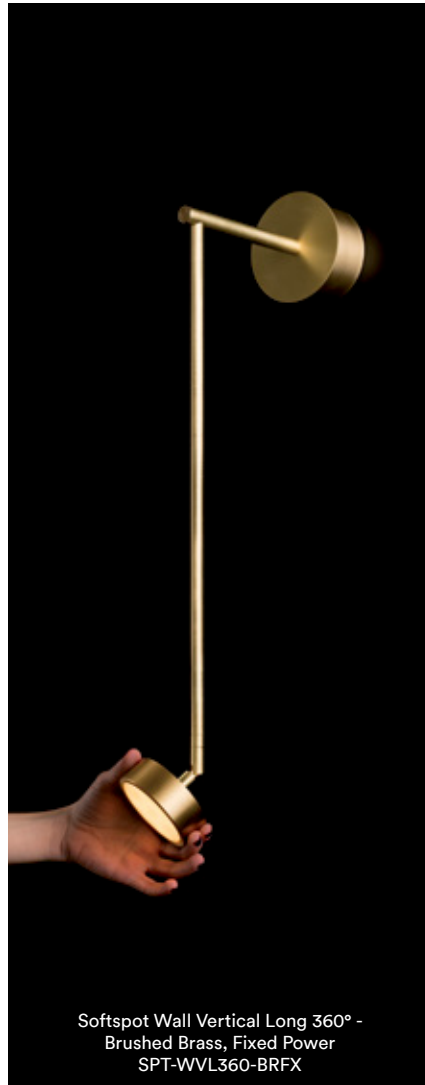
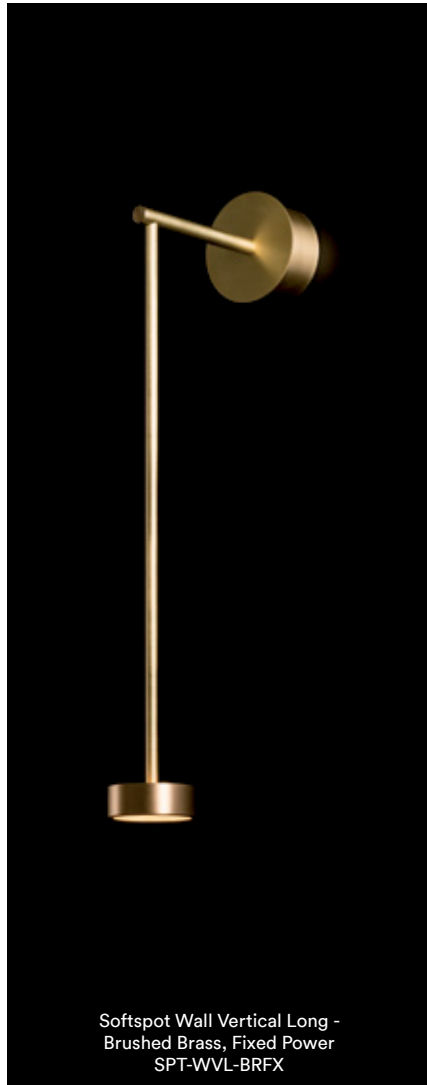


Flauti Grey 3 Pendant - Brushed Brass,
Black Cable
FLA-PGRY03-BRBC



Flauti Wall Green 1 - Brushed Brass, Fixed Power
FLA-WGRN01-BRFX
Wall version available for all models





Giopato & Coombes
design, develop and produce
lights with emotional impact that
combine the highest quality in
Italian artisan manufacturing and
British innovation.

Cristiana Giopato and Christopher Coombes began working together in 2006, driven by their desire to combine their design approach, in a continuous contamination between cultures and visions. They realise that diversity is their strength, and when these reach an equilibrium the project is defined. Intuition and rationality are the characteristics that distinguish one from the other in terms of creative approach. Their products are designed to meet two often conflicting qualities: industrial innovation and emotional impact.



April 2017

Giopato & Coombes S.r.l.
Strada Comunale Delle Corti 63
31100, Treviso, Italia

www.giopatocoombes.com
editions@giopatocoombes.com
tel: +39 0422 697997

facebook.com/giopatocoombes
instagram.com/giopatocoombes
pinterest.com/giopatocoombes

Photography
Jon Bronx
Peter Fehrentz
Arnaud Fevrier
Federico Villa

